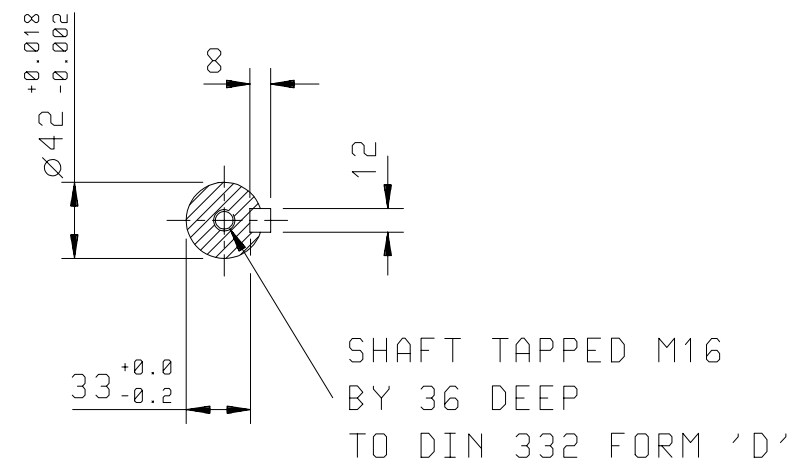
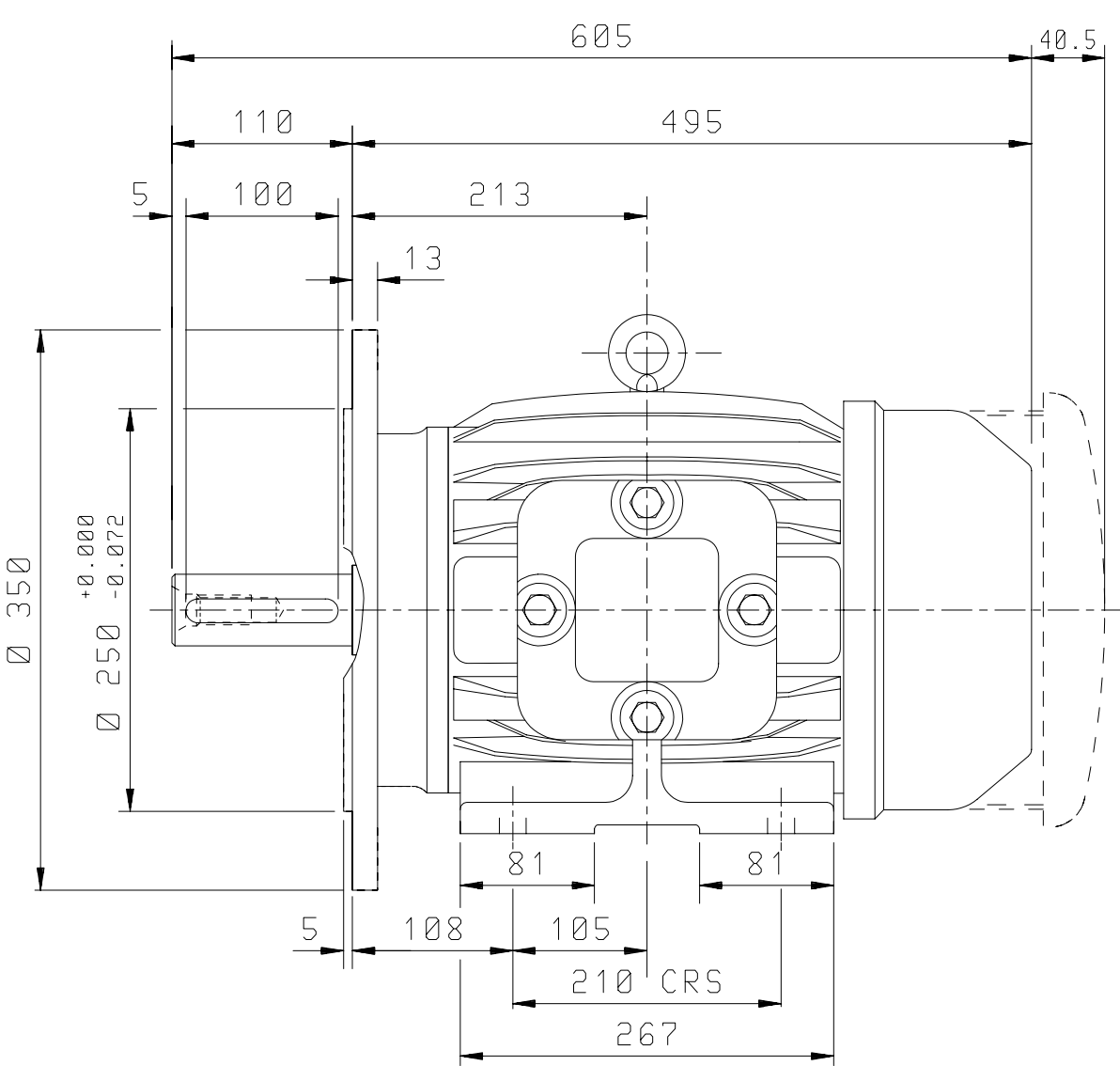


CUSTOMER		
ORDER No.		
SERIAL No.		
FRAME SIZE		
KW.	RPM.	
Hz	PHASE	
VOLTS	POLES	
BRGS.	DE.	NDE.
MOTOR NETT WT.		Kg.
SPECIAL REMARKS		



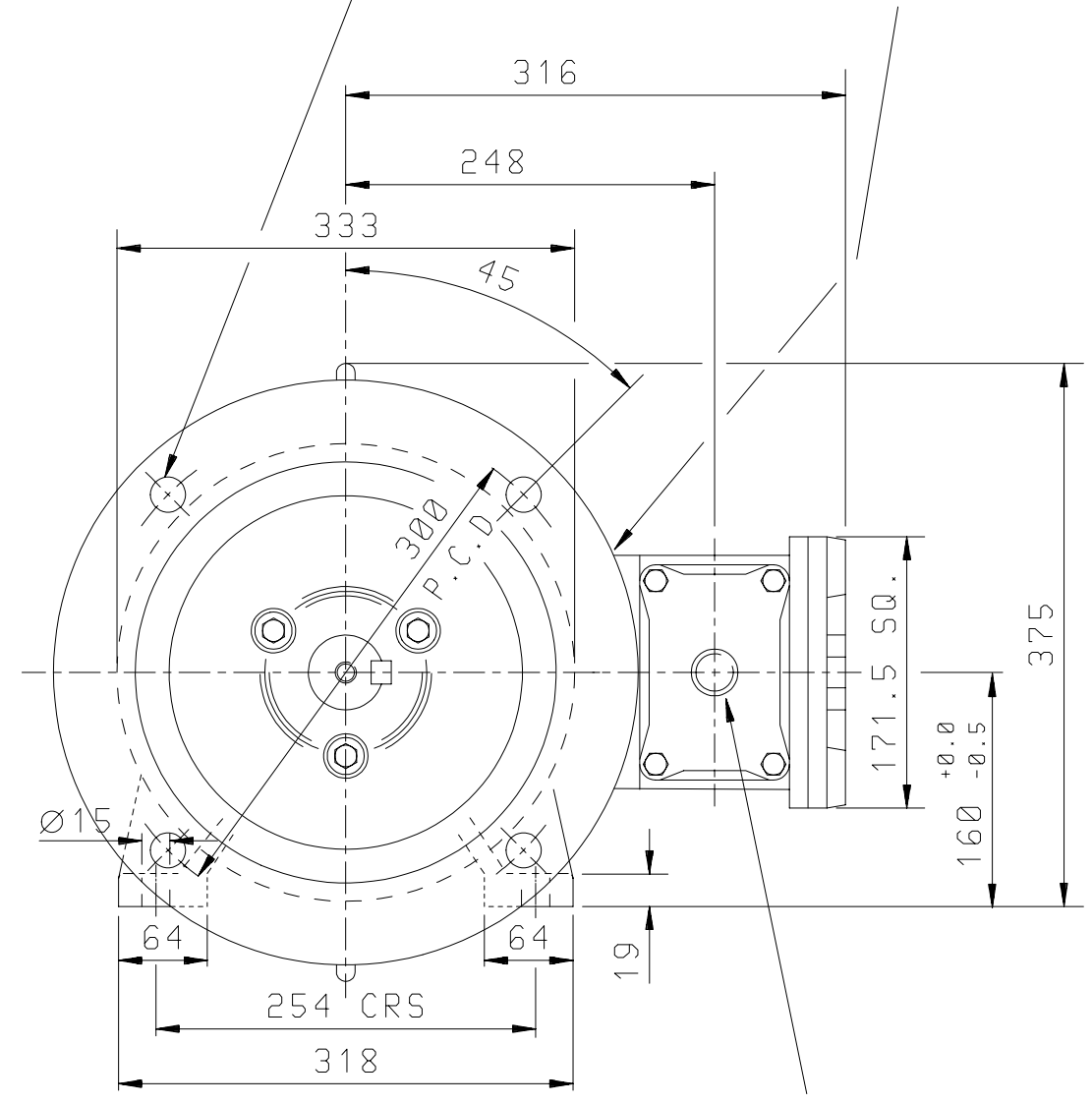
DRIP-PROOF COWL FITTED ON ALL
 VERTICAL SHAFT DOWN MOTORS &
 ALL MOTORS WITH CAST IRON
 FAN COVERS, OR WHEN REQUESTED.

SECTION ON 'X'



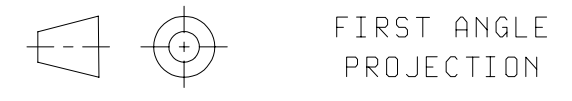
4-HOLES DRILLED Ø19
 EQUALLY SPACED AS SHOWN

EXTERNAL EARTH
 POSITION



1 x M32
 CONDUIT ENTRY TO SUIT
 COMPRESSION GLAND

ALL DIMENSIONS IN MILLIMETRES.



**BROOK
 CROMPTON**

Huddersfield, HD1 3LJ
 ENGLAND

SHEET SIZE A3	TITLE	OUTLINE DIMENSION DRAWING 'W' FLAMEPROOF TOTALLY ENCLOSED FAN COOLED EExd 160M FRAME FOOT & FLANGE MOUNTED MOTOR GROUPS IIA & IIB.	NAME	DATE
			ULS	26-03-03
			RR	26-03-03
			N.T.S	

DRG. No.	K16GD001/0		
DRG. REF.			
REVISION:		DATE	