

NOTE: -  
 TERMINAL BOX CAN BE TOP OR RIGHT  
 HAND SIDE MOUNTED BY REFITTING FEET  
 90° IN APPROPRIATE DIRECTION.  
 CABLE ENTRY CAN BE SUPPLIED IN  
 ANY ONE OF FOUR POSITIONS AT  
 90° INTERVALS.

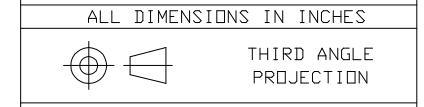
CUSTOMER		
ORDER No.		
SERIAL No.		
FRAME SIZE		
HP	RPM.	
Hz	PHASE 3	
VOLTS	POLES	
BRGS.	DE.	NDE.
MOTOR NETT. WT.	Kg.	
INSULATION CLASS		
TEMPERATURE RISE °C		
DESIGN AMBIENT TEMPERATURE °C		
HEATER WATTS & VOLTS		VOLTS

REMARKS

**BROOK CROMPTON**  
 PRELIMINARY

Large Industrial Motors  
 Guiseley, LEEDS LS20 9NZ

ALL DIMENSIONS IN INCHES



**BROOK CROMPTON**

Large Industrial Motors  
 GUISELEY, LEEDS, LS20 9NZ.

NOTE: -  
 \* ENDPLAY WILL BE PROVIDED FOR ENDTHRUST PROTECTION WHEN CUSTOMERS NOTIFY US OF THEIR INTENTION TO USE RIGID COUPLINGS AND DRIVEN MACHINES WITHOUT ENDPLAY.

OUTLINE DIMENSIONS OF STANDARD FOOT MOUNTED INCH A. C. MOTOR TO NEMA STD. MG1. TOTALLY ENCLOSED FAN COOLED. FITTED WITH SIDE MOUNTED TERMINAL BOX FRAME SIZE :- W-DF505Z-N (4 POLE UP)

SCALE	1:8	DATE
DRAWN	B. J. T.	17.1.94
CHECKED	B. J. T.	17.1.94
APPROVED	I. J. W.	17.1.94

DRG. No.	M9476
REVISION:	DATE