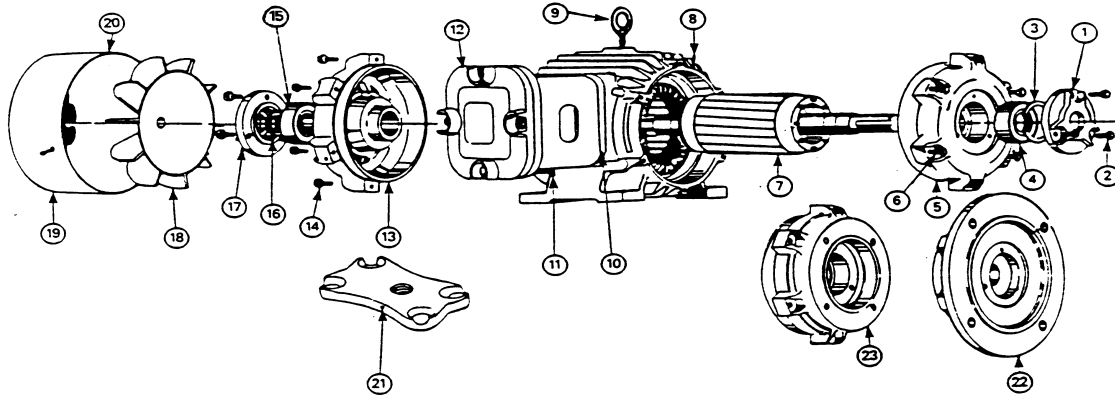


SPARE PARTS & INSTALLATION

**BROOK
CROMPTON**

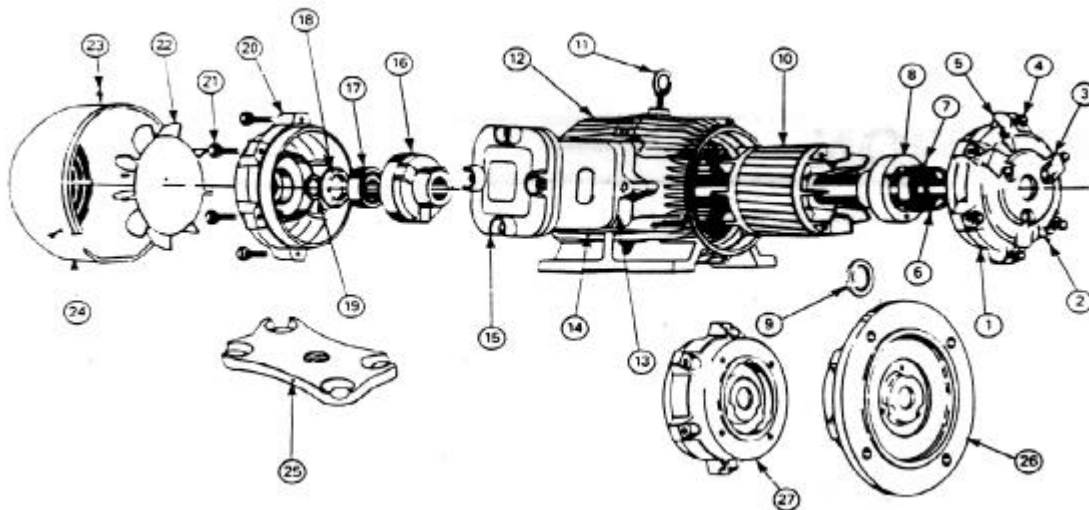
EEMAC EXPLOSION PROOF MOTORS

CAST IRON MANUFACTURE: FRAMES E143-E145

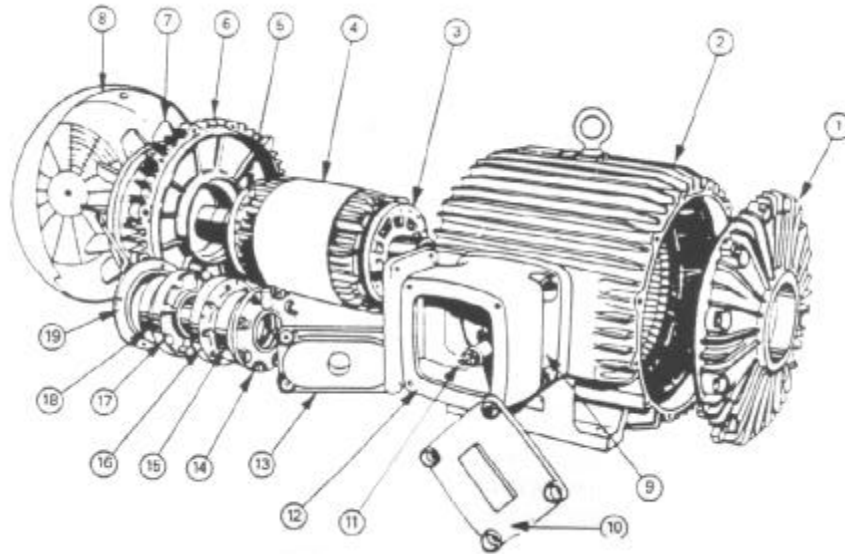


Ref.	Part Description	Ref.	Part Description	Ref.	Part Description
1	Outside cap driving end	10	Terminal plate (incorporating terminals)	18	Aluminum fan and nut or nylon fan with mills pin
2	Cap securing bolts	11	Terminal box	19	ST metal fan cover
3	Anti bump washer	12	Terminal box cover and screws	20	Fan cover screws
4	Ball bearing driving end	13	Endshield non driving end	21	Gland plate
5	Endshield driving end	14	Endshield securing bolts at no driving end	22	D flange endshield
6	Endshield securing bolts at driving end	15	Ball bearing non driving end	23	C flange endshield
7	Die cast rotor on shaft	16	Bearing nut		
8	Yoke with (or without) feet	17	Outside cap non driving end		
9	Eyebolt				

CAST IRON MANUFACTURE: FRAMES E184-E326



Ref.	Part Description	Ref.	Part Description	Ref.	Part Description
1	Endshield driving end	12	Yoke with feet (or without feet)	21	Endshield securing bolts at non driving end
2	Grease relief (where fitted)	13	Terminal plate (incorporating terminals)	22	Aluminum fan and nut or nylon fan with mills pin
3	Cap securing bolts	14	Terminal box	23	St metal fan cover and screws
4	Endshield securing bolts at driving end	15	Terminal box cover and screws	24	C.I. Fan cover and screws
5	Hydraulic grease nipple (where fitted)	16	Inside bearing cap non driving end	25	Gland plate
6	Anti bump washer	17	Ball bearing non driving end	26	D flange endshield
7	Ball bearing drive end	18	Bearing nut	27	C flange endshield
8	Inside cap driving end	19	Oilseal at non driving end		
9	False bearing shoulder (where fitted)	20	Endshield non driving end		
10	Die cast rotor on shaft				
11	Eyebolt				



Ref.	Part Description	Ref.	Part Description	Ref.	Part Description
1	Endshield driving end	8	Fan cover	15	Bearing driving end
2	Yoke with feet (or without feet)	9	Terminal plate	16	Inner bearing cover, driving end
3	Balance ring driving end	10	Terminal box lid	17	Inner bearing cover, non driving end
4	Die cast rotor on shaft	11	Terminals and terminal bushings	18	Bearing non driving end
5	Balance ring non driving end	12	Terminal box	19	Outer bearing cover, non driving end
6	Endshield non driving end	13	Conduit gland plate		
7	Fan	14	Outer bearing cover, driving end		

When ordering spare parts it is important to state the motor serial number.

- Notes:
- (a) Fixing bolts, nuts, studs, screws, spacers or washers are not included with these parts and if required should be clearly specified on the order in addition to the part description details. The fixing duty and part description reference number for which they are required should also be clearly stated.
 - (b) Bearings ordered direct from bearing manufacturers must be specified as follows:

Installation of Hazardous Atmosphere Motors

Storage

If the motor is not used immediately, it should be stored in a clean, dry place which is free from vibration.

withdrawal from Storage

Before putting a motor which has been stored into use, check that no foreign matter is present and blow out all dust and dirt. Test the insulation resistance between phases, also to ground. If this is less than one megohm, the motors should be placed in a warm dry place until this unit is obtained. The practice of running a motor having low insulation resistance on full voltage is not recommended, as a breakdown may occur before the windings dry out.

Bearings

Ball and Roller bearings are sent out from the factory fully charged with grease sufficient to last for at least two years, providing there is little or no grease leakage. When replenishing, use any good grease which is lithium base, and avoid overfilling the bearing housing.

Fitting Pinion, Pulleys and Couplings

These should be bored to our standard limits (details supplied on request) and fitted on the shaft with a screwing motion. ON NO ACCOUNT SHOULD THEY BE DRIVEN ON. Warning - Tapping of fittings on the motor shaft with a hammer or mallet caused bearing damage, resulting in an increase of bearing noise, and a significant reduction in bearing life. Where a greater interference fit is considered, the opposite driving end of the motor shaft must be supported while the shaft fitting is tapped into position. Support can be obtained by the engagement of a solidly fixed centre into the non-driving shaft end.

Wiring

The connection diagram is shown on the leaflet enclosed in the motor terminal box. The cables used should be capable of carrying the full load current of the motor (see motor nameplate) without overheating or undue voltage drop. Terminal screws should be tight. Wiring should be carried out or checked by a qualified electrician, and the equipment must be earthed in accordance with current regulations.

Routine Cleaning

Remove the fan cover and ensure that all air inlet holes are completely free. Clear any dirt and fluff from behind the fan and along the ribs of the stator.

Telephone:

Canada: 416 675-3844

Toll Free: 800 463-8917

USA: 800 668-6779

Brook Crompton - North America

264 Attwell Drive

Toronto, ON M9W 5B2

www.brookcromptonna.com

Fax:

Canada/USA:

416 675-6885